

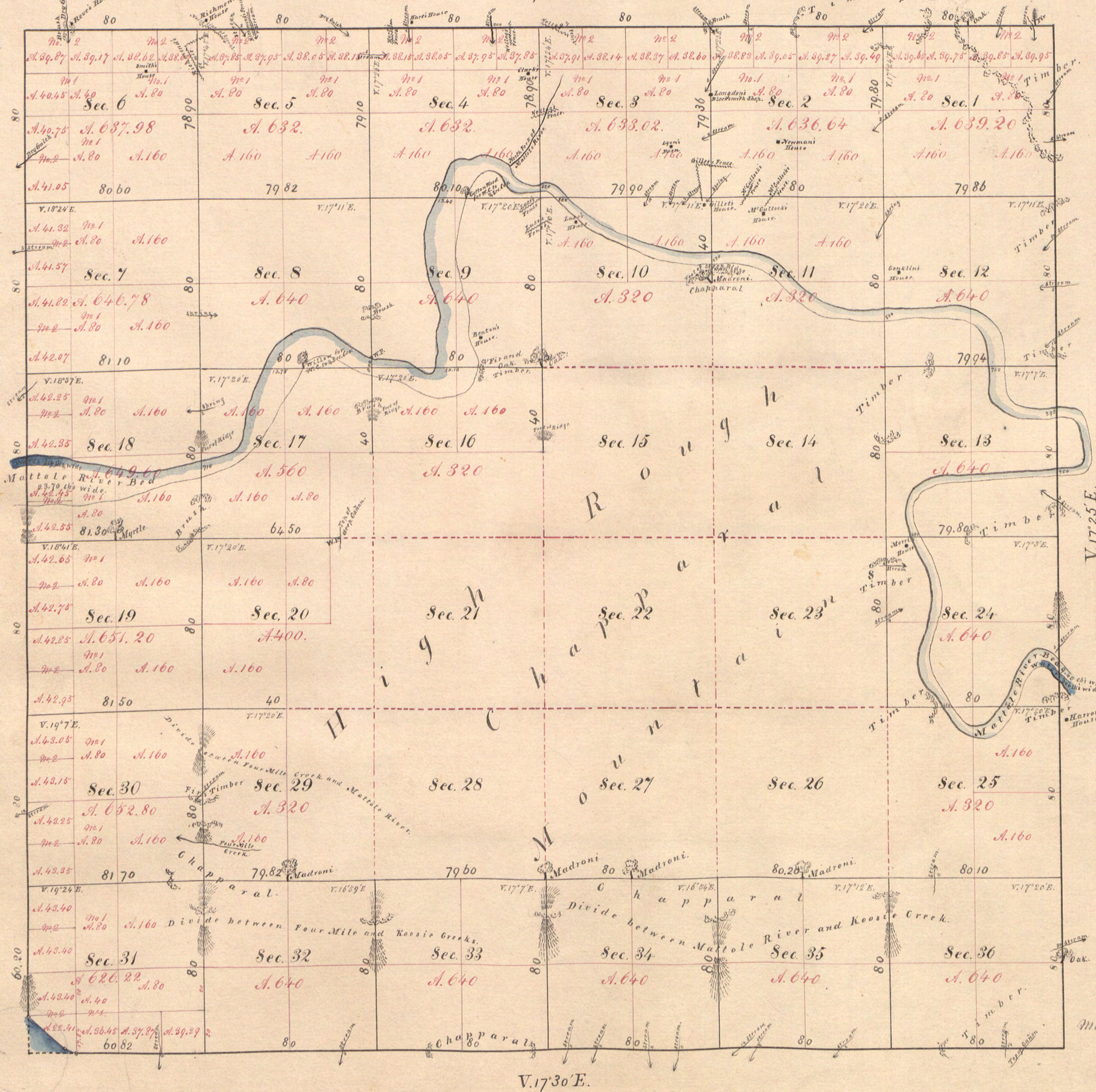
*Rec'd with Sur. Gen's Order of Sept. 27<sup>th</sup> 1861  
Paid by Report No 13506 for 2<sup>d</sup> 1861*

Township N<sup>o</sup> II South

Range N<sup>o</sup> II West

Humboldt Meridian

V. 17° 25' E.



Fractional Township, N <sup>o</sup> 2 South, Range N <sup>o</sup> 2 West of Humboldt Meridian, Bounded by Pacific Ocean.			
Beginning at Meander post on West Boundary of Section 31, and distant 69.20 chs South of the North West corner thereof, running thence South Easterly, on margin of Pacific Ocean.			
Sec.	Courses	Chs	Lhs.
31	S. 47° E.	22	00
	S. 68° E.	5	30
Aggregate		27	30

Aggregate Area of Public Lands (surveyed) 16007.42 Acs.  
Estimated " Mountain (unsurveyed) 7040.40  
Aggregate 23047.

Surveys designated.	By whom surveyed.	Date of Contract.	Amount of Surveys.	When surveyed.
Township lines.	J. S. Mastay	September 6 <sup>th</sup> 1860	23 41 62	1860
Section "	"	"	41 65 90	1861
Meander "	"	"	27 30	March 20 <sup>th</sup> 1861

A full, true and correct copy of the original Map, on file in this office  
Surveyor General's Office.  
San Francisco, California,  
September 23<sup>rd</sup> 1861

E. F. W. Beale,  
Surv<sup>r</sup> Gen<sup>l</sup> Cal<sup>a</sup>

The above Map of Township N<sup>o</sup> 2 South, Range N<sup>o</sup> 2 West, Humboldt Meridian, is strictly conformable  
to the field notes of the surveys thereof, on file in this Office, which have been examined and approved.  
Surveyor General's Office  
San Francisco, California  
May 31<sup>st</sup> 1861.

Signed  
J. W. Manderville.

Surv<sup>r</sup> Gen<sup>l</sup> Cal<sup>a</sup>