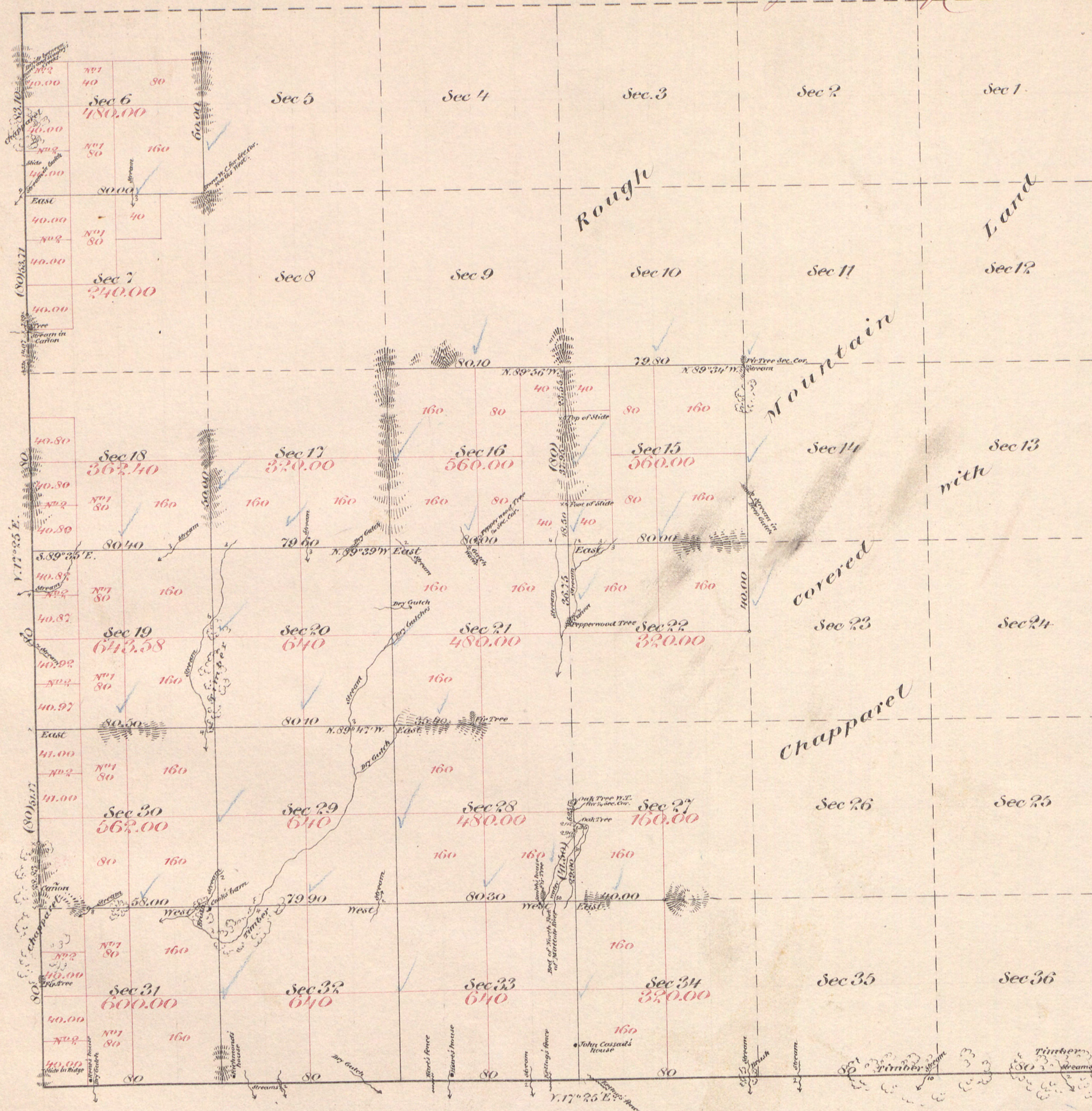


Rec^d with Sur Gen's letter of Dec^r 21. 1864.

Paid by Report 1570² Gen. Land Office
Feb 9. 1865.



Aggregate Area of Public Land	8647.98 Acres
Estimated " " Mountain "	14551.60 "
Aggregate	23199.58 "

Surveys Designated	By whom surveyed	Date of Contract	Amount of Surveys	When surveyed
South boundary of Township	J. S. Murray	September 6 th 1860		1861
West " " "	" " "	October 17 th 1864	6mils 2chs 10ths	1864
Section lines	" " "	" " "	25 " 42 " 35 "	November 15 th 1864

The above Map of Township N^o 1 South, Range N^o 2 West, Humboldt Meridian, is strictly conformable to the field notes of the surveys thereof, on file in this Office, which have been examined and approved.
Surveyor General's Office
San Francisco California
December 17th 1864



L. Dupon
Surv. Gen. Cal.
Guth on 21.3 June 1865
J.S.P.